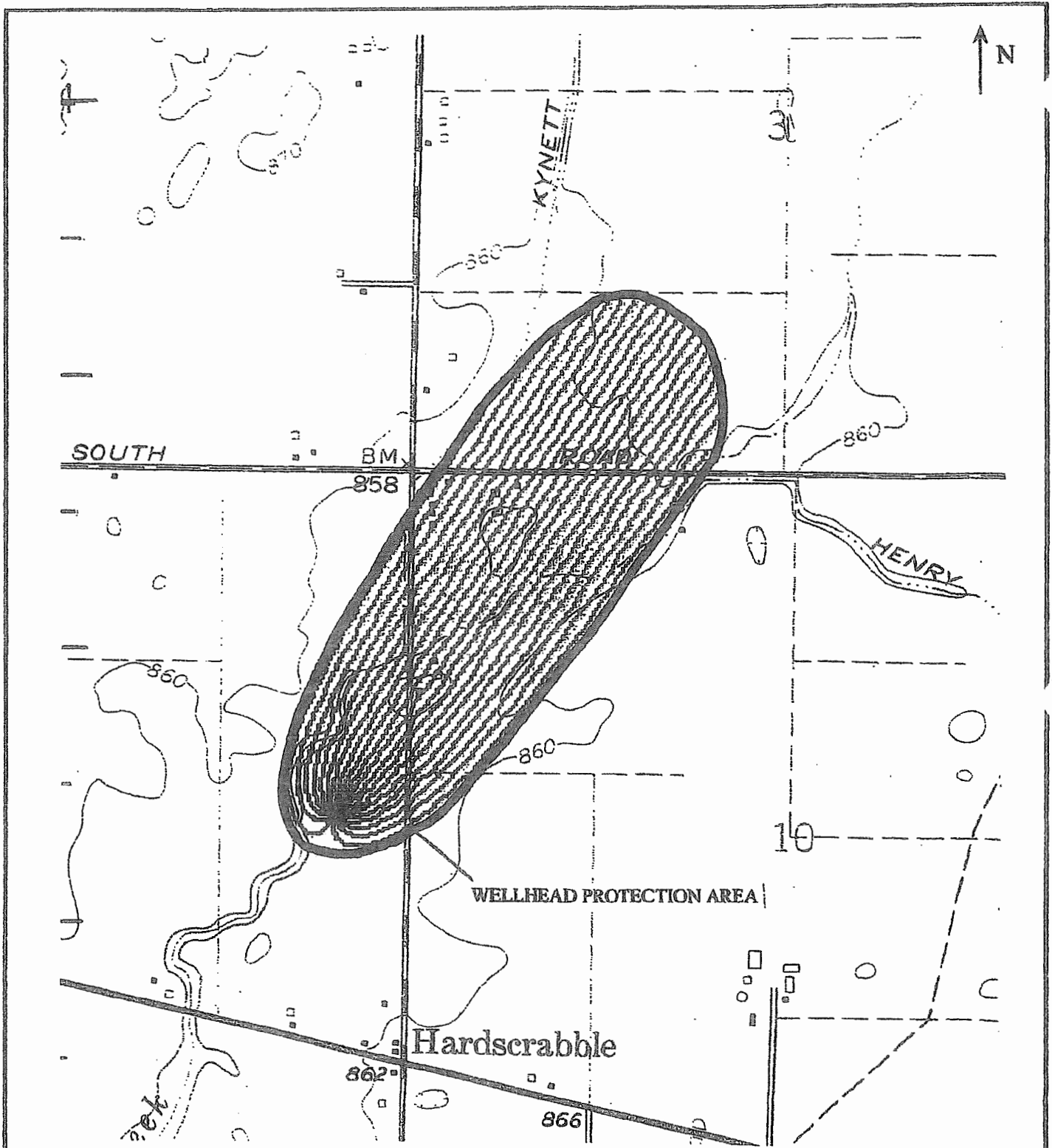
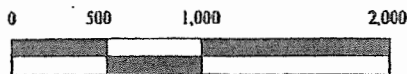


**EXHIBIT E. Town of Lapel Wellhead Protected Area of SR 13 Well**



**Figure 4-6. Town of Lapel - Wellhead Protection Area for the South Well**

**SCALE: 1" = 1,000'**



**Hydrophase, Inc.**

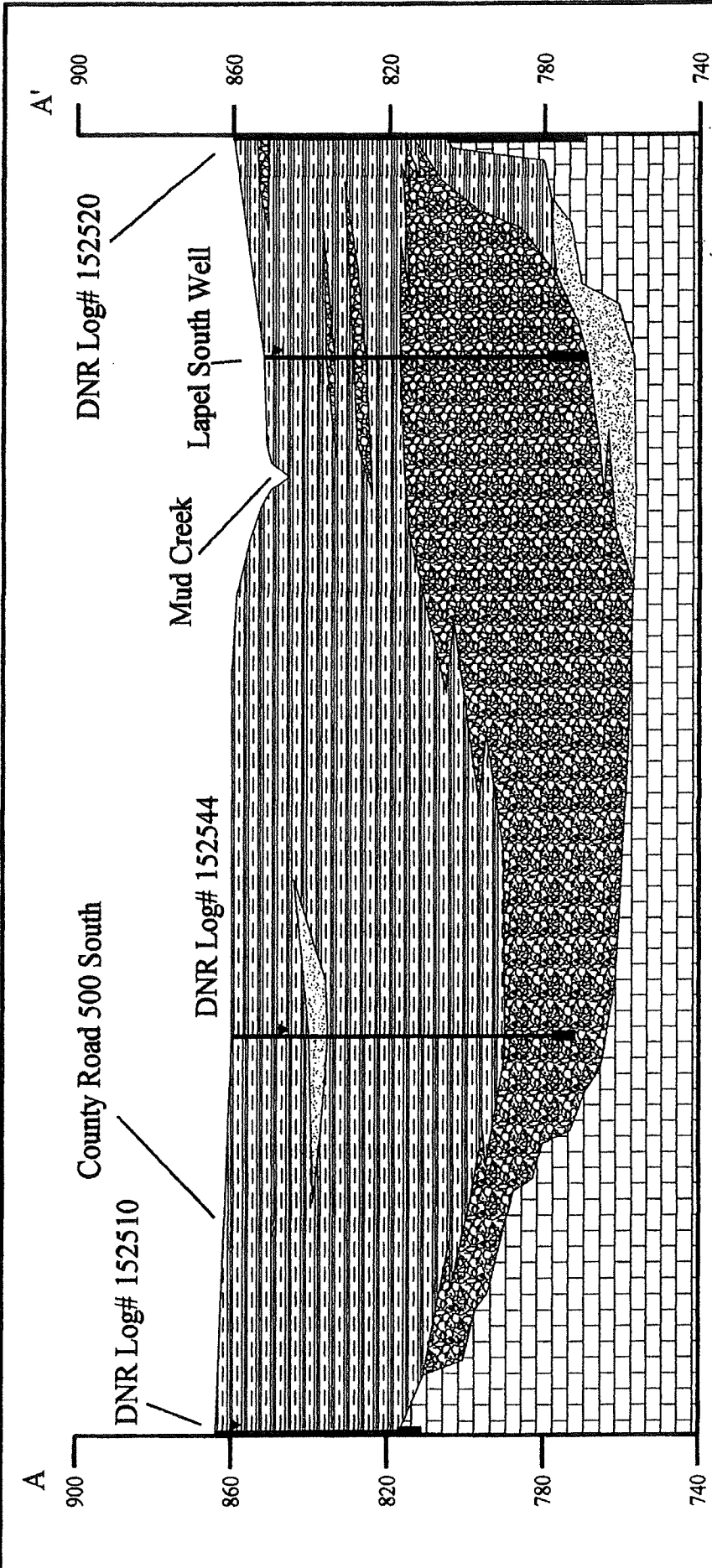









Figure 4-4. Interpretive Geologic Cross Section A-A' (Northwest to Southeast).

<p>Gravel &amp; Sand</p> 	<p>Clay/Till</p> 	<p>Water Level (if known)</p> 	<p>Well with Screen or open borehole</p> 	<p>Hydrophase, Inc.</p> 
<p>Sand</p> 	<p>Limestone</p> 	<p>LEGEND:</p>	<p>HORIZONTAL SCALE: 1" = 600'</p> <p>VERTICAL SCALE: 1" = 40'</p> <p>VERTICAL EXAGGERATION = 15</p>	

# Lapeer Water Department South IN13 Wellfield



500

13

State Road 13

0.4 Miles

0.2

0.1

0

Well



5 YR Time of Travel  
Wellhead Protection  
Area



Created by Alliance  
Indiana Rural Water  
February 2022



Source: Esri, Maxar, GeoEye, Earthstar Geographics, CNES/Airbus  
IGN, and the GIS User Community